

ca 

rear facing



Doing it **Right** ...

- I have read the car seat instructions for the exact installation instructions.
- I have read my vehicle owner's manual on how to install a car seat.
- I never place my child's car seat in front of an airbag.
- My car seat is Canadian approved and has a CMVSS label.
- My baby's weight and height are within the limits for her/his car seat.
- The car seat is facing the rear of the vehicle.
- The car seat is in the back seat of the vehicle.

The **Seat Belt** ...

- I have checked my owner's manual on how to use the seat belt for a car seat in my vehicle.
- The seat belt is inserted through the specially marked path on the car seat, back out the other side and into the vehicle seat belt buckle.
- The seat belt is tight.
- I have pushed down on the safety seat, removed all the slack from the lap portion of the seat belt and tested the belt to see that it has "locked" in place and will not slip. If the seat belt slips, I have used a locking clip.

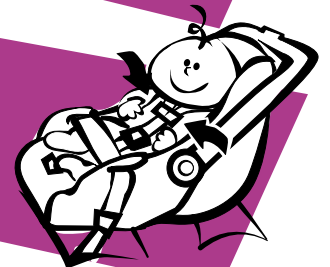
Universal Anchorage System ...

NEW

For vehicles and car seats made after September 2002, a new anchorage system is available to make installing a car seat easier. When the Universal Anchorage System (UAS/LATCH) is used, the vehicle seat belt is not required. Check your vehicle owner's manual and car seat instructions for more information.

The Car Seat **Harness Straps**...

- The shoulder harness is threaded according to the car seat instructions.
- The chest clip is positioned at the level of my child's armpits.
- The shoulder harness does not slip off my child's shoulders.
- The shoulder harness system stays snug when I pull on it.
- Less than 1 finger's width fits between the harness and my child's collar bone.



(see back page for more)